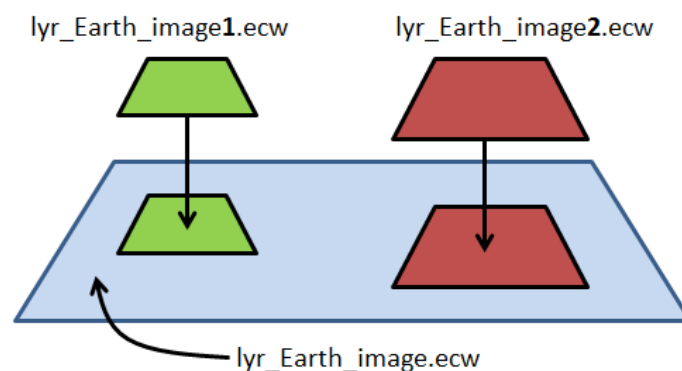


KB3011 – Add additional ECW image(s) to the MAAD2map Map Window for Zoom Layering Effect.

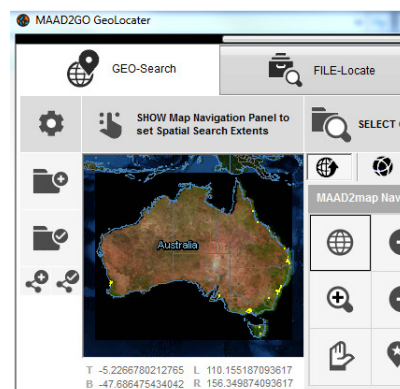
This document outlines the function introduced in version 5.0.4 to add additional ECW images on top of the base ECW image within the MAAD2map map window to provide more detailed images when zooming into an area.

Users now have the ability to display 5 additional images by layering them on top of the existing base ECW image within the MAAD2map map window. This now allows for a more detailed image(s) to be displayed when zoomed in within this window to better aid the user to locate a specific location.



Additional images displayed must adhere to the following standards;

1. The ECW image(s) must be of latitude \ longitude projection
2. Be named as either lyr_Earth_image1.ecw, lyr_Earth_image2.ecw, lyr_Earth_image3.ecw, lyr_Earth_image4.ecw or lyr_Earth_image5.ecw
3. Reside within the [%MAAD2go%]\MAADMapData folder on the PC or within the networked shared location.



Last Updated : 04/05/2015 6:12 AM

Document Name: KB3011 Additional base ECW image layers.docx

MAAD2GO is a © product of MAAD Solutions Pty Ltd