

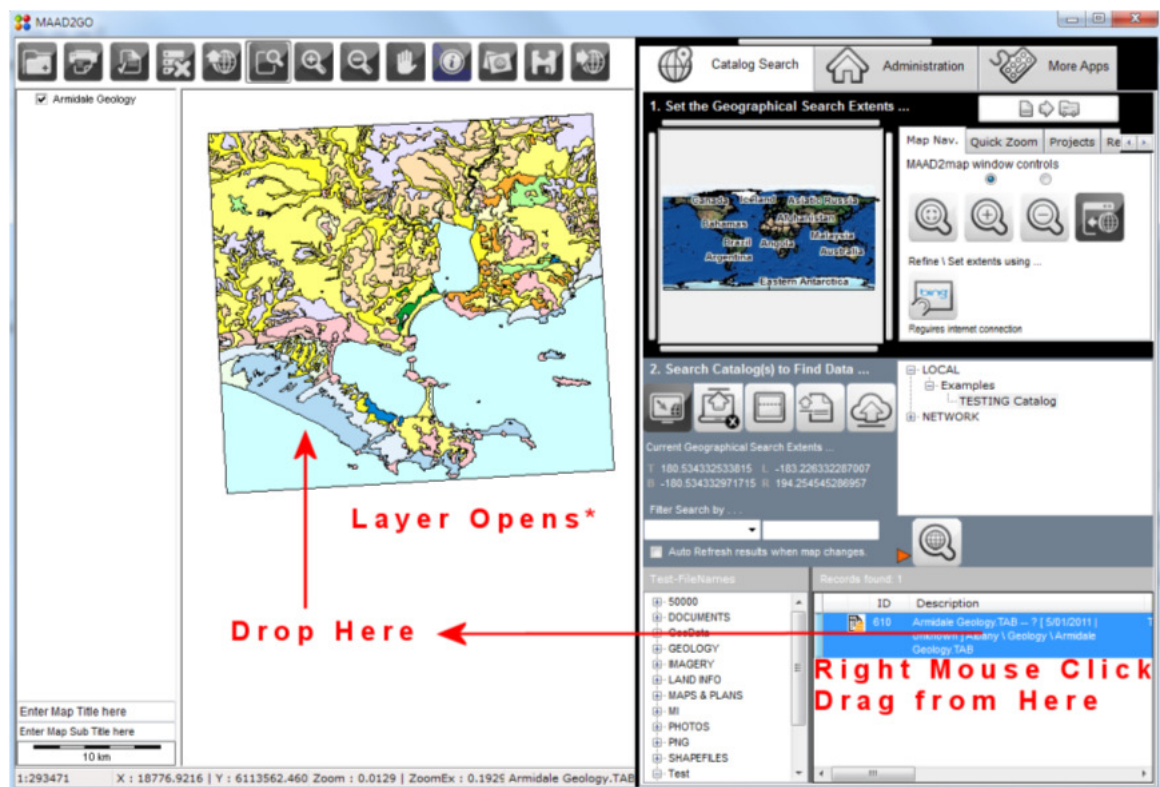
KB5003: How to Display Spatial Enabled Layers in the GIS Viewer

This document outlines the process to Display a GIS spatial layer in the GIS Viewer.

4 distinct methods can be used to display a spatial layer in the GIS Viewer;

1. From MAAD2GO Catalog Search Panel, Right mouse click and drag the selected entry and drop it into the GIS Viewer Map Window.
2. From MAAD2GO Metadata Summary Panel, Left mouse click and drag the selected entry and drop it into the GIS Viewer Map Window.
3. Open a non MAAD2GO catalog referenced file using the Open Layer button on the GIS Viewer Map Toolbar Control Panel, and browse and select a file
4. Drag and drop a file from Windows File Explorer into the GIS Viewer Map Window.

1. Display a File – Catalog Search Selection Results Panel

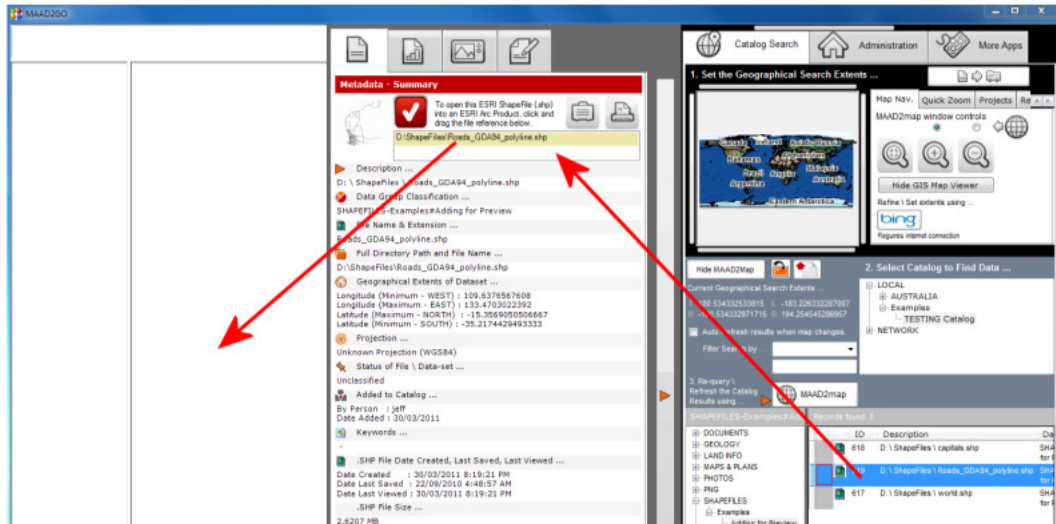


To use;

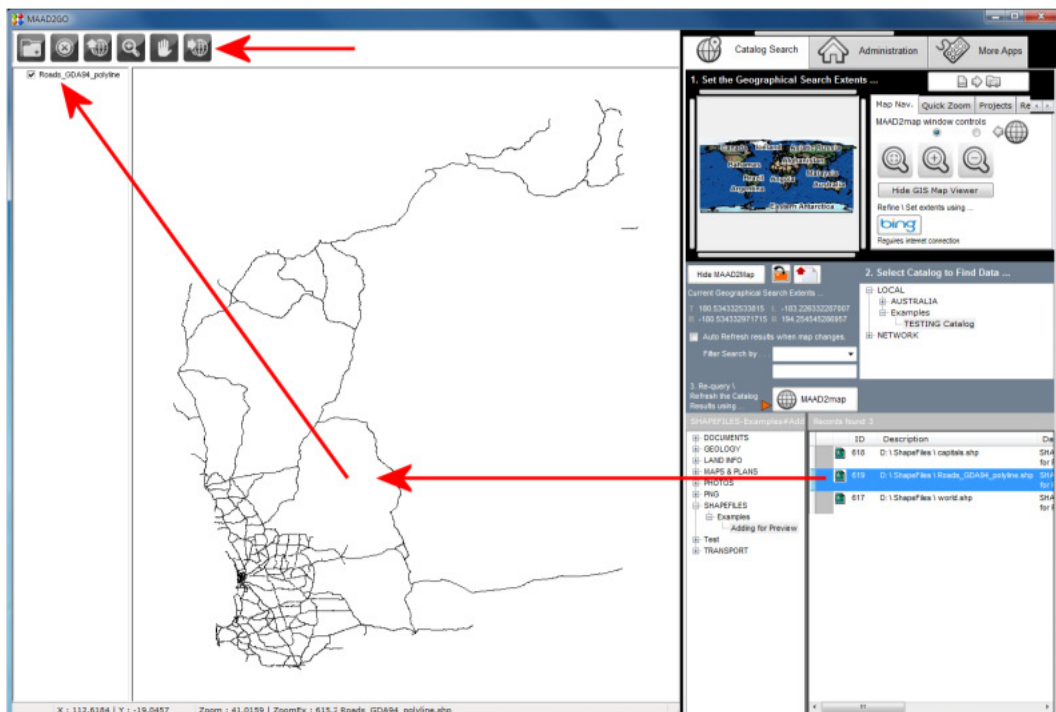
1. Right mouse click and hold the selected entry
2. Physically drag and drop the entry into the GIS Viewer Map Window (the GIS Viewer must be open for this to occur).

2. Display a File - Metadata Summary Panel

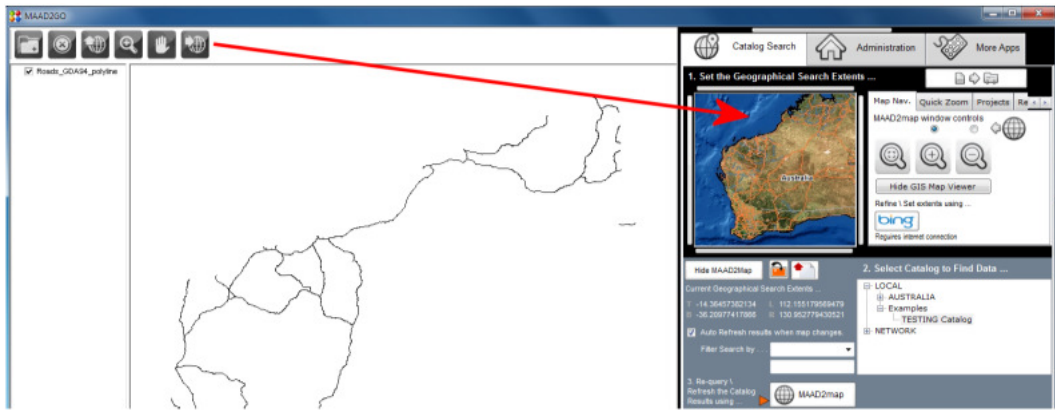
1. To open an initial GIS layer into the Map Viewer Map Window, select the option to view metadata information for a catalog search returned selection. Physically select the file reference from the Filename Drag & Drop panel within the Metadata – Summary panel. Drag the reference into the map viewer's map window. (Note: a slight lag will be evident depending on the size of the file being displayed. Initially the first layer is displayed to full extents – subsequent layers are returned to the current zoomed window extents).



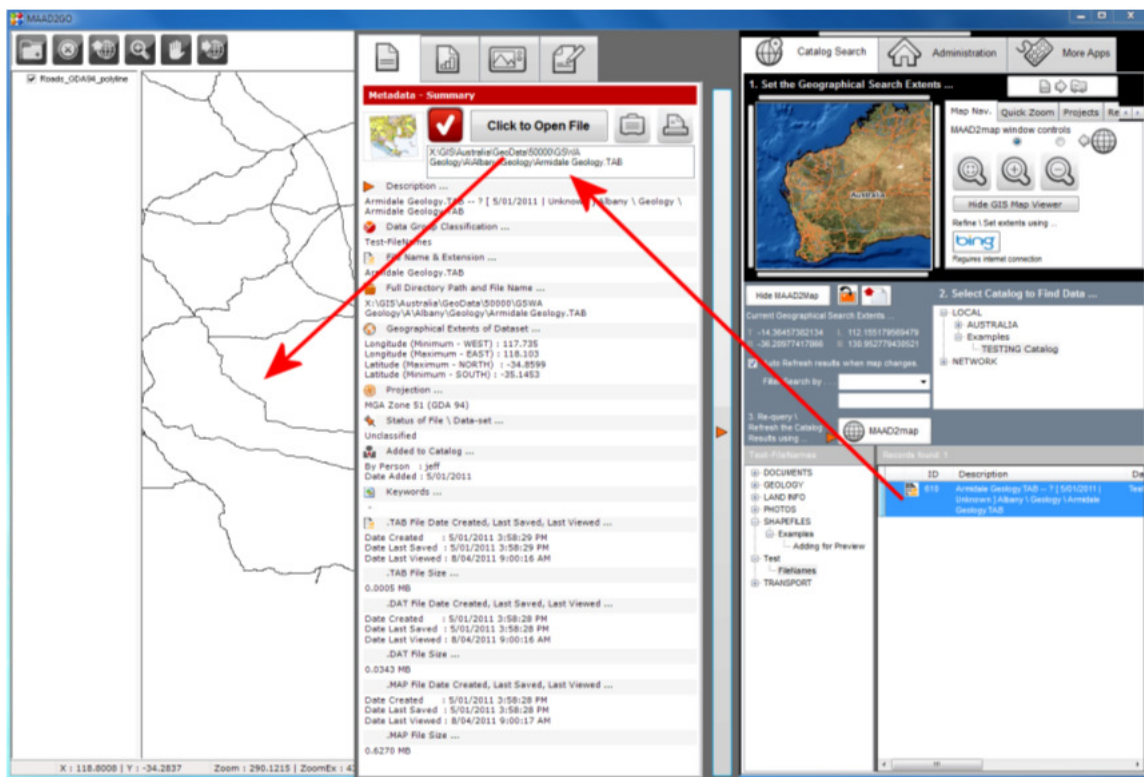
2. The GIS layer is displayed. The GIS map window will display most common spatial file formats including MapInfo Tab, ESRI Shape, AutoCad dxf\dwg, Microsotation dgn (see document titled 'Supported Files Types for the Map Viewer' for a full listing).



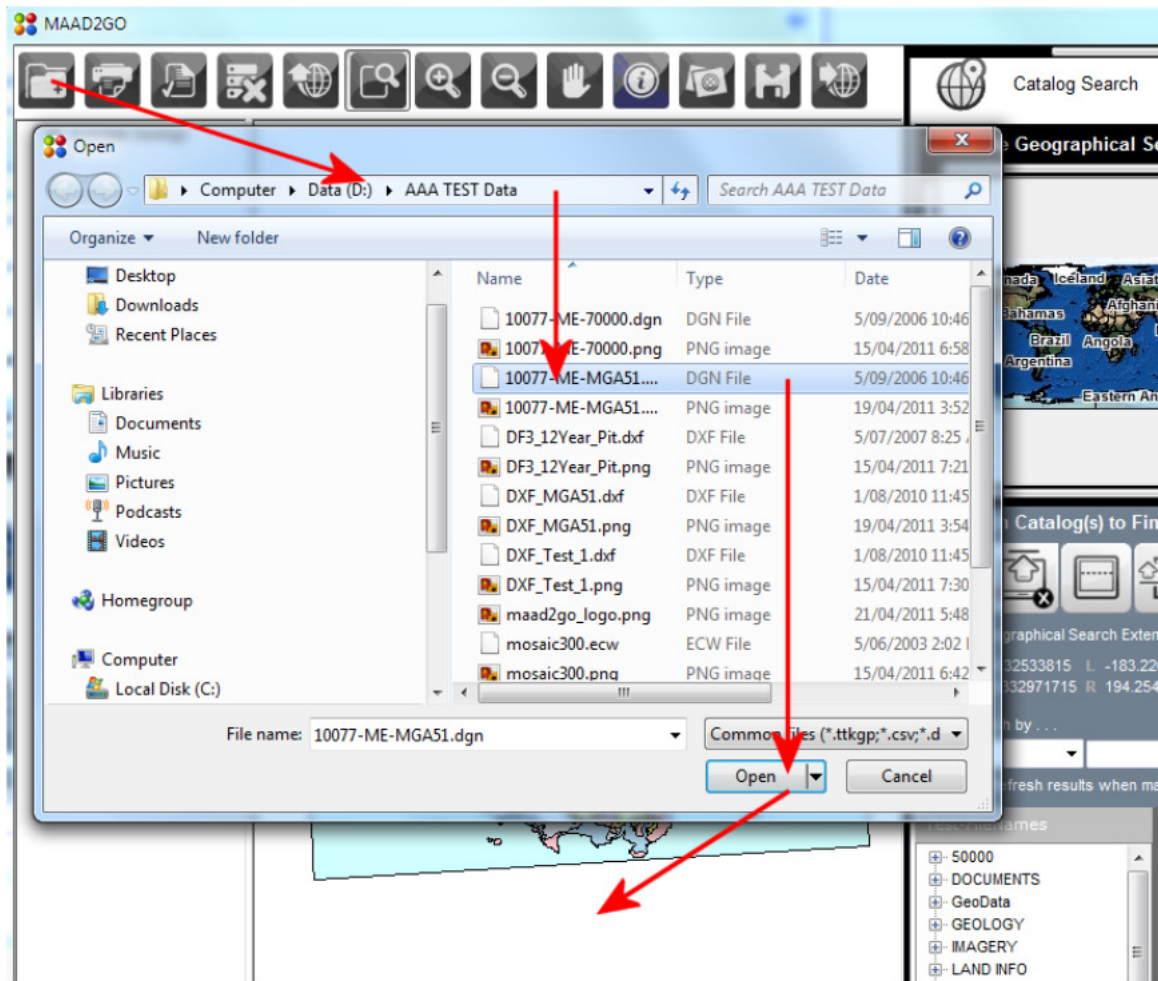
3. Currently, only limited map controls are available – consult the document titled 'Map Viewer Toolbar Controls' for a full listing of the current toolbar functionality. The example below show the option to 'push' the current map view to the MAAD2map window.



- Subsequent spatial layers (of mixed type – MapInfo tab can be opened over ESRI Shp and combined with other formats) are able to be opened into the map viewer window, and are projected into the same coordinate system projection as the base layer. Functionality to reproject on-the-fly will be available in future updates.



3. Display a File – Open Using the GIS Viewer's Open Layer Button



Last Updated : 20/06/2012 3:59 PM

Document Name : Display GIS Map Viewer.docx

MAAD2GO is a © product of MAAD Solutions Pty Ltd